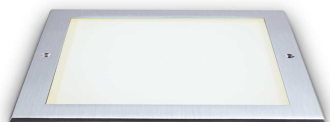


## Info generali

## Esterno - Lampade da incasso

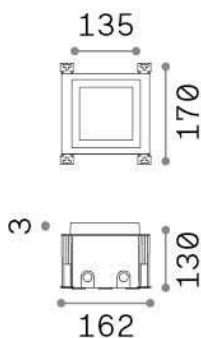
Outdoor ground recessed or ceiling recessed projector with integrated LED sources and direct light emission



<b>Ean</b>	8021696325675
<b>Articolo</b>	TAURUS PT D13 WIDE SQUARE
<b>Installazione</b>	Lampade da incasso
<b>Garanzia</b>	5 years
<b>Peso lordo</b>	1.58 kg
<b>Volume</b>	-

## Info tecniche e installative

<b>Peso netto</b>	1.58 kg
<b>Classe di isolamento</b>	I
<b>Grado di protezione</b>	IP67
<b>Conformità</b>	CE
<b>Temperatura d'esercizio</b>	-15° ~ +45 °C
<b>Efficienza a pieno carico</b>	X
<b>Dimmer</b>	NO, On-Off
<b>Alimentazione</b>	220-240 V AC 50/60 Hz
<b>Alimentatore</b>	In-built, included Replaceable (by qualified operators only), electronic
<b>Specifiche per l'incasso</b>	Ø 128 - h. ≥ 110 , 5-30
<b>Orientabilità</b>	vert. +/-30°



## Info sorgente e prestazionali

<b>Sorgente integrata</b>	Integrated LED module
<b>Sorgente sostituibile</b>	Replaceable (by qualified operators only)
<b>Potenza</b>	11 W
<b>Emissione</b>	Direct
<b>Consumo massimo</b>	max 11,00 W
<b>Caratteristiche LED</b>	LED SMD BRIDGELUX
<b>CCT LED</b>	3000 K
<b>Durata LED (t. 25°c)</b>	50000 h
<b>CRI</b>	> 80
<b>Fascio luminoso</b>	114°
<b>Flusso sorgente</b>	1250 lm
<b>Flusso utile</b>	530 lm